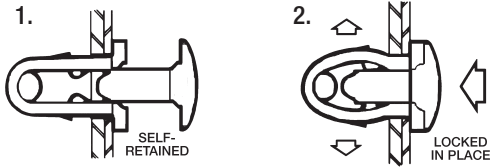


Material: Nylon (AA), Polypropeline Copolymer (AD)
Finish: Natural or Black

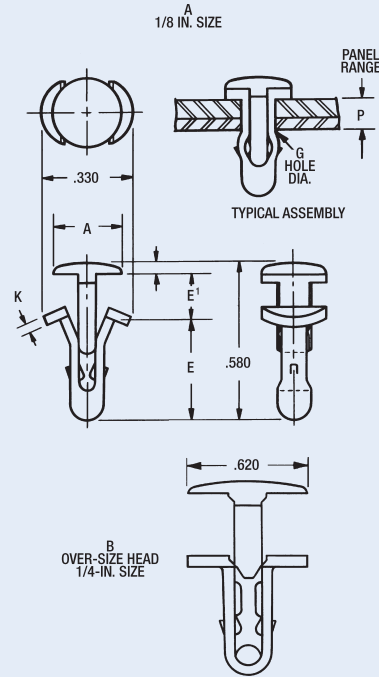


Clinch Type Plastic Fasteners

How to apply Clinch Type Plastic Fasteners



1. The "U" portion is inserted through the mounting hole. Tabs on sides of "U" provide self-retention to panels until seated.
2. The "T" shaped drive pin is then rapped lightly to bottom, expanding the sides of the "U" behind panels to lock securely in place.



Wire and Tube Retainers Plastic Fasteners

How to apply Polyclamp Fasteners

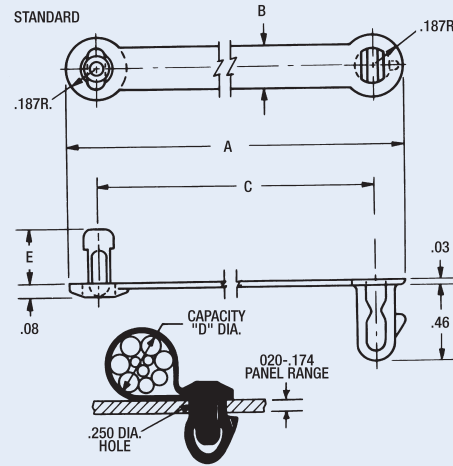


The "expander" is simply snapped into a 1/4" diameter panel hole from the front side. Retaining tab permits preassembly in any position.

The strap wraps around the wire bundle, etc. and the lock pin presses to bottom as shown. Entry enlarges the expander behind the panel for firm, positive retention.

Design Variations

Parts shown as **Standard** or with **Design Variations** are available only in that particular design.



D Capacity (Dia.)	Des. Var.	C Center to Center	A Overall Length	B Width	E	Part Number
.312	Std.	1.500	1.875	.260	.340	C60387AD-5
.375	Std.	1.710	2.085	.260	.340	C60387AD-6
.437	Std.	1.920	2.295	.260	.340	C60387AD-7
.500	Std.	2.130	2.505	.260	.340	C60387AD-8
.562	Std.	2.340	2.715	.260	.340	C60387AD-9
.812	Std.	3.180	3.555	.260	.340	C60387AD-13
2.000	Std.	7.070	7.444	.310	.380	C61563AA-7
2.250	Std.	8.070	8.444	.310	.380	C61563AA-8
2.750	Std.	10.046	10.420	.310	.380	C61563AA-10