

# Tinnerman® Single Thread Engaging One-Piece Self-Locking Fasteners

The dimensions of the above parts are envelope dimensions only. For complete design information, please request a blueprint from your Tinnerman representative or the Tinnerman Engineering department.

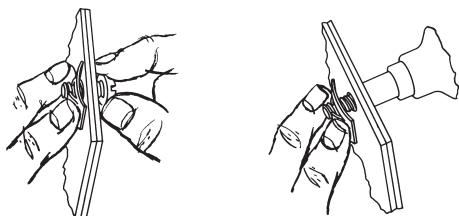
*Metric parts listed in italic*



## Flat-Type Fasteners Rectangular

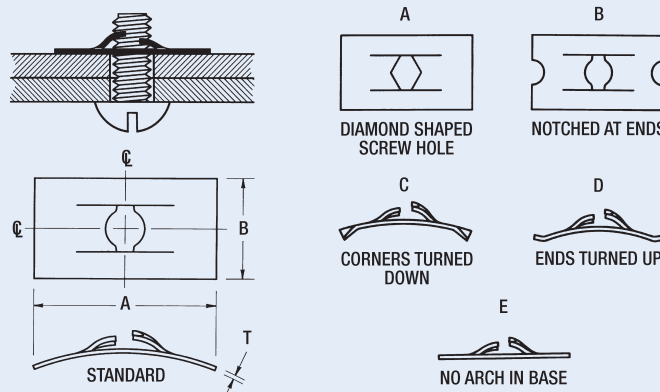
The **Flat-Type Speed Nut** is the basic design from which thousands of **Speed Nut Brand Fasteners** have been developed.

**Flat-Type Speed Nut Fasteners** are one-piece, self-locking, heat-treated, spring-steel fasteners that replace threaded nuts, lockwashers and spanner washers. On many applications, they eliminate time-consuming assembly operations. Fast and easy to apply, **Speed Nut Fasteners** provide maximum holding power at minimum cost per fastener. They never shake loose from vibration, yet can be easily loosened when desired, without worry about rust- frozen screw threads.



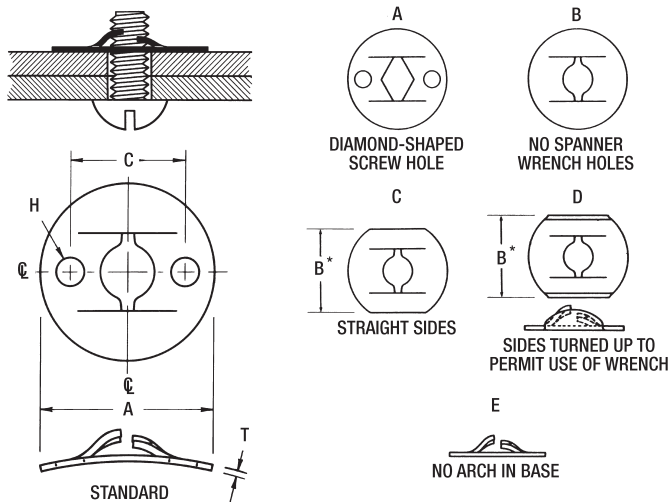
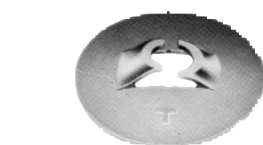
Hold **Speed Nut** in desired position with prongs pointing outward, toward fingers. Start screw through **Speed Nut** impression.

Press **Speed Nut** firmly against panel and drive screw. Finger pressure is sufficient to prevent **Speed Nut** turning as screw is driven.



Screw Size	Design Variation	A Length	B Width	T Material Thickness	Part Number
2-56	Std.	.380	.220	.010	C102-256
4-40	AC	.440	.250	.012	C1736-440
4A or 4B	Std.	.380	.250	.022	C7000-4
6-32	D	.510	.310	.017	C1181-632
6A or 6B	Std.	.870	.440	.025	C8000-6
8-32	Std.	.500	.310	.017	C7000-832
8A or 8B	Std.	.870	.470	.028	C8002-8
10-24	B	.730	.440	.022	C1150-1024
10A or 10B	Std.	.750	.500	.031	C7000-10
1/4-20	C	1.000	.560	.020	C8613-020
14A or 14B	Std.	.880	.560	.037	C7000-14
5/16-18	Std.	.980	.630	.028	C601-5618
3/8-16	A	1.000	.750	.034	C1297-3816
1/2-13	A	1.220	.880	.017	D7516-017*

## Flat-Type Fasteners Round



Screw Size	Design Variation	A Diameter	B Width	C Center To Center	H Hole Diameter	T Material Thickness	Part Number
4B	BC	.380	.250	—	—	.022	C71046SS-4Z
6-32	BC	.380	.340	—	—	.017	C1000-632
8-32	BDE	.820	—	—	—	.017	C7868-832
8A or 8B	Std.	.500	—	.375	.062	.025	C944-8Z
10-24	Std.	.570	—	.415	.103	.025	C8642SS-1024
10-32	ABC	.570	.440	—	—	.017	C520-1032
10B	Std.	.570	—	.415	.103	.031	C171-10Z
<i>M6X1.0</i>	<i>Std.</i>	<i>19.050</i>	—	<i>10.420</i>	<i>2.400</i>	<i>.430</i>	<i>C71530-M61*</i>
1/4-20	BDE	.820	.640	—	—	.025	C166-1420
5/16-18	ABCE	.880	.690	—	—	.025	C15320-5618

\* Zip-On Fit

Frequently Specified Fasteners **8** Thousands More Available!