

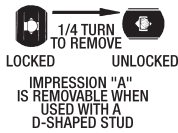
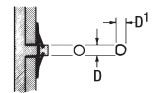
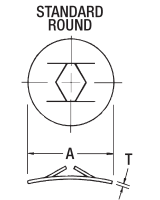
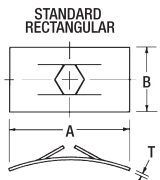
Material: All parts are **Spring Steel**, heat treated, unless otherwise specified.
 The only variations available are those shown with suffix letters in the part number.
 SS – Stainless Steel BE – Beryllium Copper P – Phosphor Bronze



Push-on-Type Fasteners (Round Studs)

Tinnerman **Push-On-Type Fasteners** provide lightning-fast attachments to plain unthreaded studs such as rivets, die cast studs, tubing, nails, rods, etc. They make a positive "bite" on metal, plastic or wood and grip securely even on very smooth, hard surfaces. No threaded devices of any kind are necessary; therefore, the rate of assembly can be greatly increased through their use. Attachments can be made permanent or removable, as the product requires, by simply using the proper fastener or stud modification recommended. Made of quality high carbon spring steel, heat treated, they assure long, dependable service life at a minimum of assembly cost.

IMPRESSION VARIATIONS

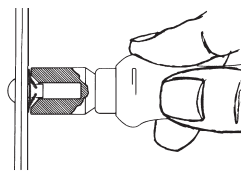


- A FOR ROUND STUDS AND STUDS WITH D WIDTH
- B FOR HARDENED STUDS
- C SIDE PRONGS
- D 4 PRONG-SHEARED
- E 6 POINT
- F 4 PRONG-SLOTTED
- G 8 PRONG-SLOTTED
- H FOR D-SHAPED STUDS ONLY

- J REMOVAL HOLES
- K SIDES TURNED UP
- L SIDES CUT OFF
- M DISH BASE
- N CORNERS TURNED DOWN
- P TURNED UP ENDS
- R NO ARCH IN BASE
- S CORNERS CUT OFF
- T SPHERICAL DOME

Stud Size D Dia.	D1 Width	Type	Des. Vari- ation	A Length or Dia.	B Width	T Mat'l. Thick.	Part Number
.059-.065	.044-.054	Rect.	A	.380	.220	.012	C12001-012
		Round	Std.	.500	—	.012	C11033-012
.091 - .097	.069-.079	Rect.	A	.450	.230	.012	C12002-012
		Round	CR	.220	—	.010	C13388SS-010
.122 - .128	.095-.105	Rect.	A	.580	.310	.012	C12003-012
		Round	Std.	.430	—	.012	C17969-012
.153-.159	.120-.130	Rect.	AJ	.870	.560	.012	C17182-012
		Round	DM	.380	—	.012	C13790-012
.185-.191	.145-.155	Rect.	A	.630	.380	.017	C12005-017
		Round	FM	.560	—	.011	C18234-187
.216-.222	.170-.180	Rect.	A	.620	.440	.012	C12006-017
		Round	L	.500	.380	.017	C12045-017
6.100-6.250	---	Round	AR	19.050	—	.300	C71631-030M
.247-.253	.182-.192	Rect.	A	.640	.560	.012	C573-012
		Round	L	.560	.440	.017	C12046-017
.309-.315	---	Rect.	Std.	.630	.500	.014	C7818-014
		Round	GR	.630	—	.010	C17022SS-010
.372-.378	.295-.305	Rect.	A	.750	.560	.020	C12009-020
		Round	FM	.730	—	.014	C18235-375
.436-.438	---	Rect.	Std.	1.000	.690	.020	C6313-020
		Round	BL	.910	.630	.017	C11600-017
.495-.505	---	Rect.	P	.920	.750	.017	C867-017
		Round	FR	.790	—	.014	C70524-014
14.000-14.000	---	Rect.	Std.	31.000	22.300	.430	D98166-043M
.620-.630	---	Rect.	Std.	.980	.810	.017	C1529-017
		Round	GR	.960	—	.014	C70891SS-014
.740-.750	---	Rect.	GR	1.630	—	.025	C15802-025
		Round	P	1.480	1.250	.017	C1583-017
.995-1.005	---	Rect.	PS	1.450	1.250	.017	C7195-017
		Round	A	2.300	—	.017	C13232-017
1.997-2.003	---	Rect.	FN	2.750	2.750	.014	C10044-014

How to apply Push-on-Type Speed Nut Fasteners



Stud engaging **Speed Nut** brand fasteners are used in two ways. Either as free parts which are pressed over shaft, stud or rod ends; or captive parts which are retained on a panel in stud-receiving position. Whether the fastener is applied to the work or the work is applied to the fastener, the method is simply to position the two in square alignment and zip into locked position.

