

R-N SERIES RIVET NUT PROFILE

The **R-N Series Rivet Nut** features a heavy duty head profile and increased wall thickness in the collapse area. This makes the R-N Series ideal for leg leveling applications as shown on page 7.

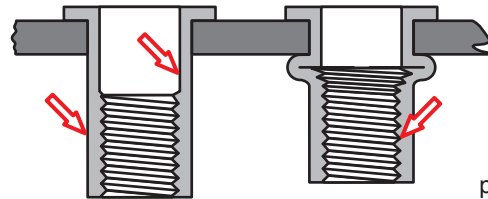
The R-N Series Rivet Nut can be installed using AVK's SPP™ pneumatic/hydraulic tools or the specific rivet nut tools shown on page 37. The R-N Series Rivet Nut's heavier wall thickness and resulting upset load requires this type of tool be used for installation. The R-N Series can be installed either prior to or after finish.



COLD FORMING TECHNOLOGY™

HOW IT WORKS FOR YOU

The R-N Series Rivet Nuts are manufactured using state-of-the-art cold forming technology. This provides very precise tolerances. All surfaces of the R-N Series are FORMED, not machined. This provides excellent quality.






The internal thread of the R-N Series Rivet Nut is roll FORMED not machined. This provides excellent thread strength.

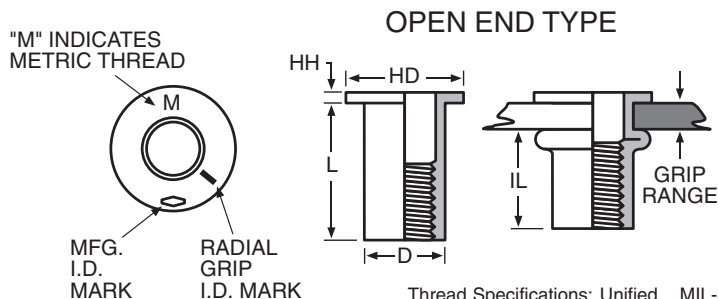
DESIGN BENEFITS

- ◆ **INCREASED PUSH-OUT LOADS** are achievable in leg leveling applications when using the R-N Series due to its heavy duty head profile and thick wall construction.
- ◆ **SUPERIOR THREAD STRENGTH** is provided due to our internal rolled thread manufacturing process.
- ◆ **SUPERIOR CORROSION RESISTANCE** is provided by our standard cadmium finish (72 hours. salt spray).
- ◆ **UNIFORM INSTALLATION** is guaranteed because of the dimensional tolerances and concentricity tolerances built into our product made possible by our cold forming technology.
- ◆ **AVAILABLE** in steel and aluminum. For additional materials, contact AVK for availability.

ADDITIONAL DESIGN TYPES

<p>CLOSED END</p>  <p>Thread area is enclosed eliminating leakage past the threads from either side of the application. Contact AVK for availability.</p>	<p>KEYED HEAD</p>  <p>An underside of the head "key" projection when placed into a matching "keyed" hole design provides additional torque resistance. Contact AVK for availability.</p>	<p>100° COUNTERSUNK HEAD</p>  <p>A 100° countersunk head profile when installed into a matching countersunk hole provides a flush installation. Contact AVK for availability.</p>
---	---	---

FLATHEAD UNIFIED (INCH) AND METRIC THREAD SIZES



THREAD SIZE	THREAD CALL OUT	GRIP RANGE	GRIP CALL OUT	I.D. MARK	HOLE SIZE + .003 - .000	HD ±.015	HH NOM.	L ±.015	D** +.000 -.004	IL REF.
4-40 UNC	440	.010-.060	60	BLANK	5/32 (.155)	.270	.025	.345	.155	.230
4-40 UNC	440	.060-.085	85	1-RAD.	5/32 (.155)	.270	.025	.370	.155	.230
4-40 UNC	440	.085-.110	110	2-RAD.	5/32 (.155)	.270	.025	.400	.155	.230
6-32 UNC	632	.010-.075	75	1-RAD.	#12 (.189)	.325	.032	.438	.189	.300
6-32 UNC	632	.075-.120	120	3-RAD.	#12 (.189)	.325	.032	.500	.189	.315
6-32 UNC	632	.120-.160	160	5-RAD.	#12 (.189)	.325	.032	.500	.189	.270
8-32 UNC	832	.010-.075	75	1-RAD.	#2 (.221)	.357	.032	.438	.221	.300
8-32 UNC	832	.075-.120	120	3-RAD.	#2 (.221)	.357	.032	.500	.221	.315
8-32 UNC	832	.120-.160	160	5-RAD.	#2 (.221)	.357	.032	.500	.221	.270
10-32 UNF	1032	.010-.080	80	BLANK	1/4 (.250)	.406	.038	.531	.250	.380
10-32 UNF	1032	.080-.130	130	1-RAD.	1/4 (.250)	.406	.038	.594	.250	.390
10-32 UNF	1032	.130-.180	180	2-RAD.	1/4 (.250)	.406	.038	.641	.250	.390
1/4-20 UNC	420	.020-.080	80	BLANK	Q (.332)	.475	.058	.625	.332	.450
1/4-20 UNC	420	.080-.140	140	1-RAD.	Q (.332)	.475	.058	.687	.332	.450
1/4-20 UNC	420	.140-.200	200	2-RAD.	Q (.332)	.475	.058	.750	.332	.450
5/16-18 UNC	518	.030-.125	125	BLANK	Z (.413)	.665	.062	.750	.413	.505
5/16-18 UNC	518	.125-.200	200	1-RAD.	Z (.413)	.665	.062	.875	.413	.555
5/16-18 UNC	518	.200-.275	275	2-RAD.	Z (.413)	.665	.062	.937	.413	.540
3/8-16 UNC	616	.030-.115	115	BLANK	12.5 mm (.490)	.781	.088	.844	.490**	.585
3/8-16 UNC	616	.115-.200	200	1-RAD.	12.5 mm (.490)	.781	.088	.938	.490**	.595
3/8-16 UNC	616	.200-.285	285	2-RAD.	12.5 mm (.490)	.781	.088	1.031	.490**	.605
1/2-13 UNC	813	.050-.150	150	BLANK	5/8 (.625)	.906	.085	.906	.625	.605
1/2-13 UNC	813	.150-.250	250	1-RAD.	5/8 (.625)	.906	.085	1.031	.625	.630
1/2-13 UNC	813	.250-.350	350	2-RAD.	5/8 (.625)	.906	.085	1.141	.625	.640

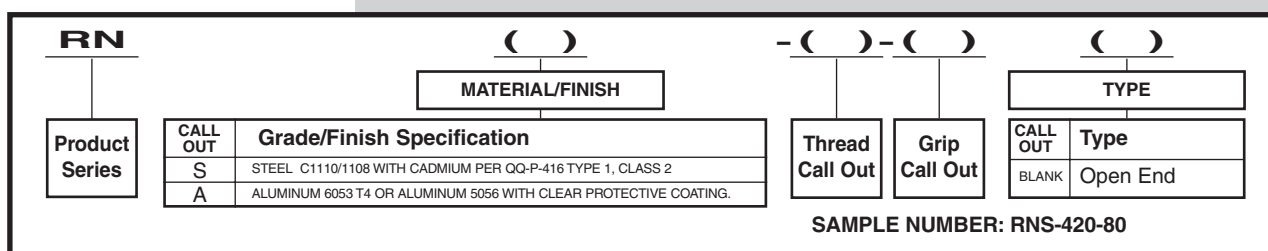
Note: ** +0.00 -0.07

THREAD SIZE	THREAD CALL OUT	GRIP RANGE	GRIP CALL OUT	I.D. MARK	HOLE SIZE +0.08 -0.00	HD ±0.38	HH NOM.	L ±0.38	D** +0.00 -0.10	IL REF.
M3x0.5 ISO	350	0.25-1.00	1.0	BLANK	3.94	6.68	0.63	8.00	3.93	5.61
M3x0.5 ISO	350	1.00-1.75	1.75	1-RAD.	3.94	6.68	0.63	8.75	3.93	5.61
M3x0.5 ISO	350	1.75-2.50	2.5	2-RAD.	3.94	6.68	0.63	9.50	3.93	5.61
M4x0.7 ISO	470	0.25-2.00	2.0	BLANK	5.60	9.01	0.81	11.00	5.61	7.08
M4x0.7 ISO	470	2.00-3.00	3.0	1-RAD.	5.60	9.01	0.81	12.00	5.61	7.08
M4x0.7 ISO	470	3.00-4.00	4.0	2-RAD.	5.60	9.01	0.81	13.00	5.61	7.08
M5x0.8 ISO	580	0.25-2.00	2.0	BLANK	7.20	11.17	1.22	14.50	7.13	10.09
M5x0.8 ISO	580	2.00-3.50	3.5	1-RAD.	7.20	11.17	1.22	16.00	7.13	10.09
M5x0.8 ISO	580	3.50-5.00	5.0	2-RAD.	7.20	11.17	1.22	17.50	7.13	10.09
M6x1.0 ISO	610	0.75-2.00	2.0	BLANK	8.50	13.43	1.47	15.50	8.43	10.58
M6x1.0 ISO	610	2.00-3.50	3.5	1-RAD.	8.50	13.43	1.47	17.00	8.43	10.58
M6x1.0 ISO	610	3.50-5.00	5.0	2-RAD.	8.50	13.43	1.47	18.50	8.43	10.58
M8x1.25 ISO	8125	1.00-3.00	3.0	BLANK	10.50	16.65	1.57	18.00	10.48	11.83
M8x1.25 ISO	8125	3.00-5.00	5.0	1-RAD.	10.50	16.65	1.57	20.00	10.48	11.83
M8x1.25 ISO	8125	5.00-7.00	7.0	2-RAD.	10.50	16.65	1.57	22.00	10.48	11.83
M10x1.5 ISO	1015	1.00-3.00	3.0	BLANK	12.50	19.50	2.23	20.00	12.44**	13.20
M10x1.5 ISO	1015	3.00-5.50	5.5	1-RAD.	12.50	19.50	2.23	22.50	12.44**	13.20
M10x1.5 ISO	1015	5.50-8.00	8.0	2-RAD.	12.50	19.50	2.23	25.00	12.44**	13.20
M12x1.75 ISO	12175	1.00-3.00	3.0	BLANK	15.50	22.79	2.23	24.00	15.46	16.45
M12x1.75 ISO	12175	3.00-5.50	5.5	1-RAD.	15.50	22.79	2.23	26.50	15.46	16.45
M12x1.75 ISO	12175	5.50-8.00	8.0	2-RAD.	15.50	22.79	2.23	29.00	15.46	16.45

Note: ** +0.00 -0.07

NOTE 1: Grip range can be affected by parent material density and actual hole size. AVK suggests trial installations to determine optimum grip. **NOTE 2:** Additional UNF and UNC threads are available. Contact AVK for details. **NOTE 3:** RN Series threads are not gaugeable after installation. **NOTE 4:** Additional grip sizes, materials, head styles and closed end versions are available by special order. Contact AVK for details.

PART NUMBERING SYSTEM



For air tool selection see pages 34 and 37

** Products with ** (two asterisks) do not meet or comply with MS/NAS Specifications