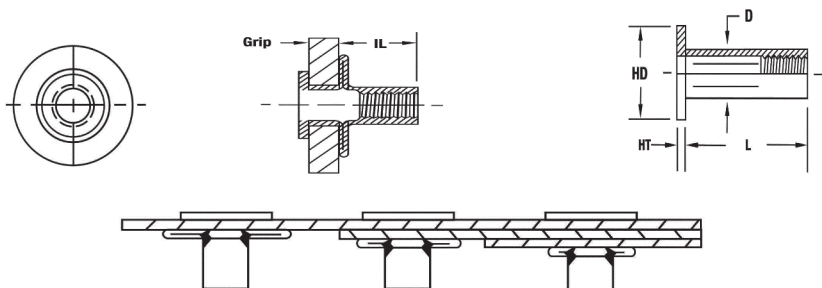


CPN STRAIGHT SHANK SLOTTED BODY SERIES



Installs into single, variable, or multiple thickness materials.

CPN SERIES



- The CPN series offers a large grip range for installation into single, variable or multiple thickness materials.
- Large backside footprint provides increased pull out resistance.
- Designed to be installed in thin plastics without distorting the base material.
- Inch body
- Inch and metric threads

UNIFIED THREAD (UNIT - INCHES)

Part Number (Steel)	Thread Size	Grip Range		HD		L	HT	D	IL	Hole Size
		Min.	Max.	Min.	Max.	± .015	± .005	Max.	Ref.	+ .006/- .000
CPN2-1024-175♦	10-24 UNC	.020	.175	.490	.510	.781	.038	.272	.425	.273
CPN2-1024-320♦	10-24 UNC	.175	.320	.490	.510	.921	.038	.272	.425	.273
CPN2-1032-175♦	10-32 UNF	.020	.175	.490	.510	.781	.038	.272	.425	.273
CPN2-1032-320♦	10-32 UNF	.175	.320	.490	.510	.921	.038	.272	.425	.273
CPN2-2520-280	1/4-20 UNC	.020	.280	.610	.645	1.000	.059	.346	.505	.347
CPN2-2520-500♦	1/4-20 UNC	.280	.500	.610	.645	1.234	.059	.346	.505	.347
CPN2-3118-280♦	5/16-18 UNC	.020	.280	.740	.770	1.141	.062	.437	.570	.438
CPN2-3118-500♦	5/16-18 UNC	.280	.500	.740	.770	1.375	.062	.437	.570	.438

METRIC THREAD (UNIT - MILLIMETERS)

Part Number (Steel)	Thread Size	Grip Range		HD		L	HT	D	IL	Hole Size
		Min.	Max.	Min.	Max.	± 0.38	± .13	Max.	Ref.	+ .15/- 0.00
CPN2-580-4.45♦	M5x0.8 ISO	0.50	4.45	12.45	12.95	21.03	0.96	7.47	9.90	7.48
CPN2-580-8.1♦	M5x0.8 ISO	4.45	8.10	12.45	12.95	23.80	0.96	7.47	9.90	7.48
CPN2-610-7.1♦	M6x1.0 ISO	0.50	7.10	15.50	16.38	25.40	1.50	8.79	12.80	8.80
CPN2-610-12.7♦	M6x1.0 ISO	7.10	12.70	15.50	16.38	31.32	1.50	8.79	12.80	8.80
CPN2-8125-7.1♦	M8x1.25 ISO	0.50	7.10	18.80	19.65	28.95	1.57	11.10	14.48	11.11
CPN2-8125-12.7♦	M8x1.25 ISO	7.10	12.70	18.80	19.65	34.90	1.57	11.10	14.48	11.11

♦ Non-Standard Part: Minimum order quantity required after depletion of stock. Please contact Sherex for current availability.

PART NUMBERING SYSTEM

CPN Specifications

Material:

Steel 1008/1010

Aluminum 6061

RoHS Compliant Finishes:

Zinc Plated-Yellow Trivalent Chromate per Sherex SFS-01-001, SC2

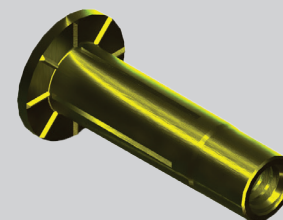
Zinc Plated-Clear Trivalent Chromate per Sherex SFS-01-001

Part Number

Example: CPN2-2520-280

CPN	2	2520	280	()
Product Style	2-Steel	Thread Size	Grip Range	Empty-Open End
Slotted Body	3-Aluminum			T-Clear Trivalent
Straight Shank				W-Wedge Head

Special finish or material available upon request



WEDGE HEAD

Grip range can be affected by parent material and hole size. Sherex recommends trials installations to determine the proper grip range for the application. Contact Sherex for details. Contact Sherex for test data.

CPN Series must be installed with spin pull tooling. For more information see pages 39-44.

Sherex rivet nuts are compatible with the following hardware:
GRADE 2, GRADE 5, CLASS 8.8 and CLASS 9.8
Please contact Sherex when using other grade fasteners.