

LARGE SIZE RIVET NUT SERIES

**LARGE
SIZE
series**

The first product line of its kind offering Rivet Nuts up to 3/4"-10 (M20)



FEATURES AND BENEFITS

- Provide a strong thread in thin sheet materials.
- Can be installed from one side of the work piece.
- Do not need to be welded to the base material.
- Available in a Round Body or a Full Hex Body for increased spin out resistance.
- Plated with a RoHS compliant Zinc Trivalent Clear plating.

SIZES AND STYLES

- Unified Sizes Available:
 - 1/2" Thread Round Body & Hex Body
 - 5/8" Thread Round Body & Hex Body
 - 3/4" Thread Round Body
- Metric Sizes Available:
 - M12 Thread Round Body & Hex Body
 - M16 Thread Round Body & Hex Body

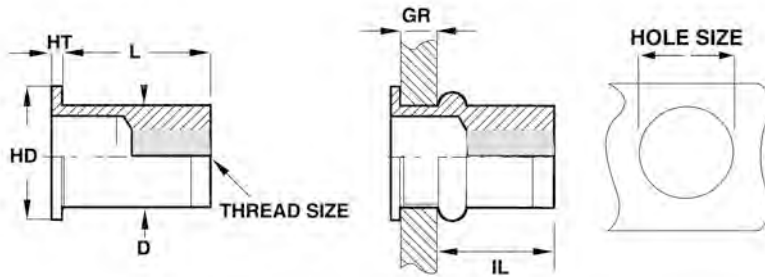


Large Size rivet nuts are designed to be installed with the Sherex Flex 18 (see page 42 for details).

LARGE SIZE RIVET NUT SPECIFICATIONS

**LARGE
SIZE
series**

Round Body



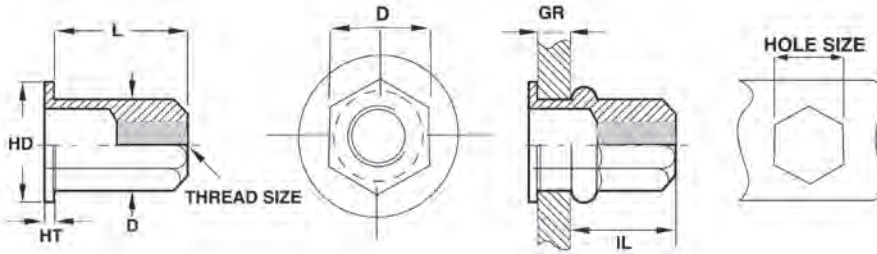
LRGR SERIES - ROUND BODY UNIFIED THREAD (UNIT - INCHES)

SHEREX Part Number Inch - Steel	Thread Size	Grip Range		L	HD	HT	D	IL	Hole Size
		Min.	Max.	± .015	± .025	± .004	Max.	Ref.	+ .010/- .000
LRGR2-5013-150	1/2-13 UNC	.050	.150	1.260	.945	.085	.656	.984	.656
LRGR2-6211-200	5/8-11 UNC	.080	.200	1.428	1.181	.098	.826	1.142	.827
LRGR2-7510-250	3/4-10 UNC	.010	.250	1.210	1.235	.118	.906	.878	.907

LRGR SERIES - ROUND BODY METRIC THREAD (UNIT - MILLIMETERS)

SHEREX Part Number Metric - Steel	Thread Size	Grip Range		L	HD	HT	D	IL	Hole Size
		Min.	Max.	± .38	± .64	± .10	Max.	Ref.	+ .25/- .000
LRGR2-12175-3.8	M12x1.75 ISO	1.27	3.80	32.00	24.00	2.16	16.65	25.00	16.66
LRGR2-1620-5.0	M16x2.0 ISO	2.00	5.00	36.27	30.00	2.50	20.98	29.00	21.00

Full Hex Body



LRGH2 SERIES - FULL HEX BODY UNIFIED THREAD (UNIT - INCHES)

SHEREX Part Number Inch - Steel	Thread Size	Grip Range		L	HD	HT	D (A/F)	IL	Hole Size (A/F)
		Min.	Max.	± .015	± .025	± .004	Max.	Ref.	+ .010/- .000
LRGH2-5013-150	1/2-13 UNC	.050	.150	1.181	1.024	.085	.656	.866	.656
LRGH2-6211-200	5/8-11 UNC	.080	.200	1.260	1.260	.118	.826	.965	.827

LRGH2 SERIES - FULL HEX METRIC THREAD (UNIT - MILLIMETERS)

SHEREX Part Number Metric - Steel	Thread Size	Grip Range		L	HD	HT	D (A/F)	IL	Hole Size (A/F)
		Min.	Max.	± .38	± .64	± .10	Max.	Ref.	+ .25/- .000
LRGH2-12175-3.8	M12x1.75 ISO	1.27	3.80	30.00	26.00	2.16	16.65	22.00	16.66
LRGH2-1620-5.0	M16x2.0 ISO	2.00	5.00	32.00	32.00	3.00	20.98	24.50	21.00

Contact **H.W.E** for test data.

Sherex rivet nuts are compatible with the following hardware:

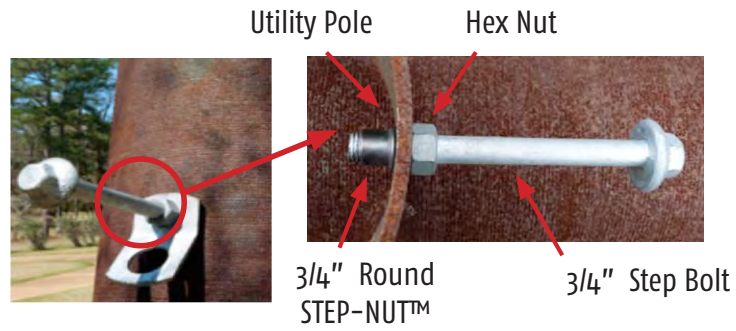
GRADE 2, GRADE 5, CLASS 8.8 and CLASS 9.8

Please contact **H.W.E.** when using other grade fasteners.

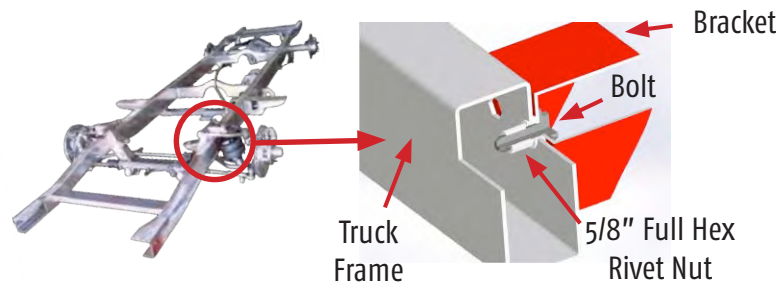
**LARGE
SIZE
series**

LARGE SIZE RIVET NUT APPLICATIONS

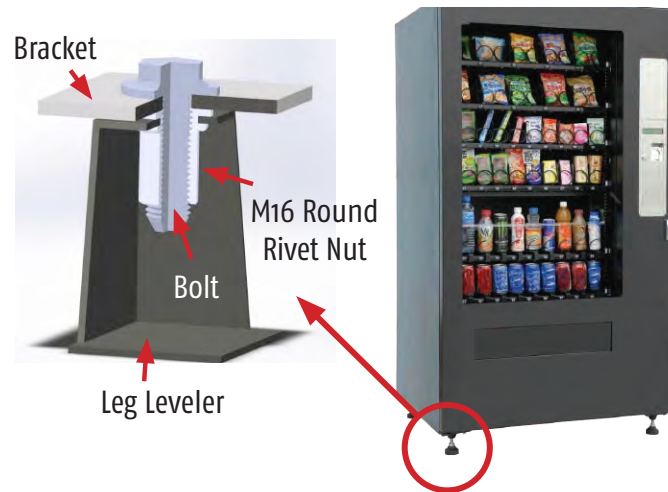
Utility Pole Attachments



Truck Frame Attachments



Vending Machine Leg Leveler



Railcar Attachments

